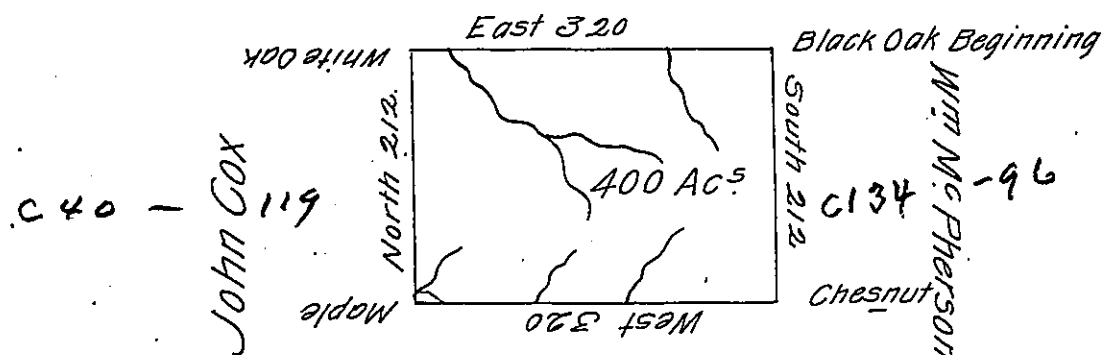


✓

Mark Biddle



John Donally

The above is a Draught of a Survey made the 4th of February 1795
 in pursuance of a Warrant Granted to John Dunlap for 400 Acres
 of Land Dated the 4th of January 1794. Situate North and West
 of the River Ohio on the Waters of Conaquenssing Creek Adjo-
 ining Land Granted to Mark Biddle. Called Dunster Containing
 four Hundred Acres with the Usual Allowance of Six p^r. Cent for Roads
 Jonathan Leet, D.S.

To Daniel Brodhead Esq^r
 Surveyor General

IN TESTIMONY that the above is a copy of the original remaining on file in
 the Department of Internal Affairs of Pennsylvania, made
 conformably to an Act of Assembly approved the 16th day of
 February, 1833, I have hereunto set my Hand and caused
 the Seal of said Department to be affixed at Harrisburg,
 this eighth day of August 1904.

[Signature]
 Secretary of Internal Affairs.